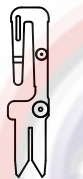
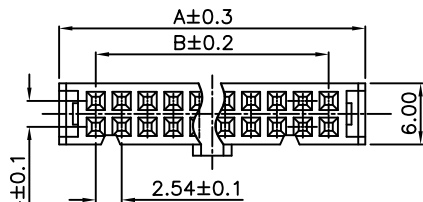


Dept
Qty
DC 1
ED 1
IE 1
ISO 1
PD 1
R&D 1
SD 1
QA 1
QC 1
QE 1

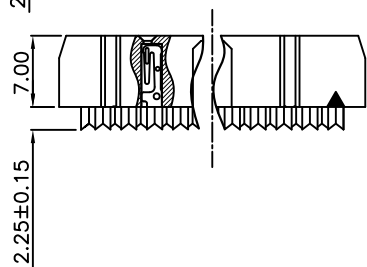
The information provided herein is from CONNELY Electronic Co., Ltd. and is confidential. Any disclosure to a party other than the recipient is prohibited. The intellectual properties and its rights contained herein, including but not limited to, trademarks, patents, copyrights, trade secrets, and technical know-how, are owned exclusively by CONNELY or its affiliates. Unauthorized use of this information in any format or manner. CONNELY may enforce its intellectual property rights at its own discretion; failures or delays to exercise such rights does not constitute a waiver of such rights.

| REV. | DESCRIPTION | DRAWN | CHECKED | APPROVED |
|------|------------------|---------------|---------------|---------------|
| A | NEW RELEASE | LJH 09/20/05' | | LJC 09/20/05' |
| B | ADD PACKING TYPE | JLZ 04/02/15' | HZW 04/02/15' | LJC 04/02/15' |
| C | DRAWING UPDATE | JLZ 08/24/18' | | |

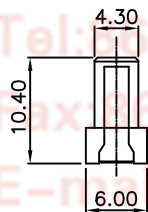
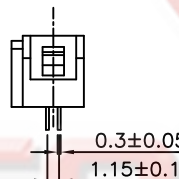
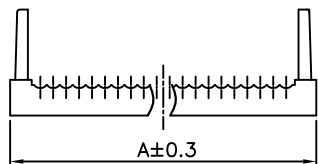
HOUSING WITH CONTACT



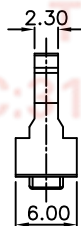
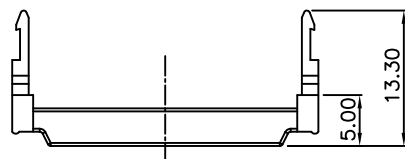
Contact Scale:2/1



UPPER COVER

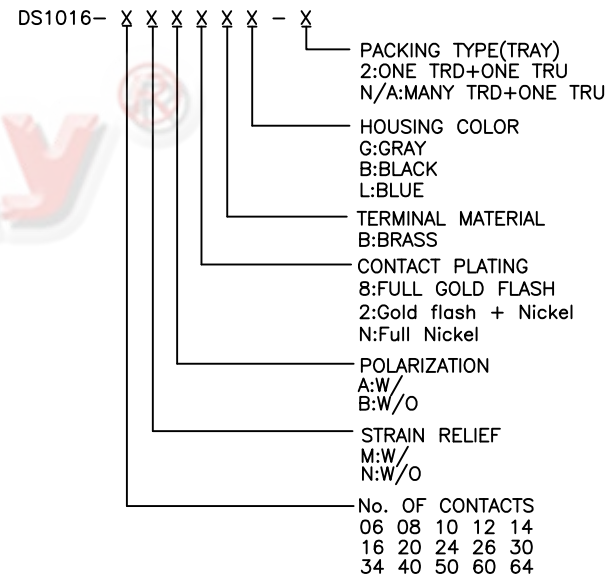


TOP COVER



NOTES:

- ELECTRICAL CHARACTERISTICS:
 - CONTACT RESISTANCE: 20mΩ Max. INITIAL.
 - DIELECTRIC WITHSTANDING VOLTAGE: 500V AC(rms) FOR 1 MINUTE.
 - INSULATION RESISTANCE: 1000MΩ Min.
- ENVIRONMENT CHARACTERISTICS:
 - TEMPERATURE: -40°C~+105°C.
- PART NUMBER: DS1016
- PRODUCT NUMBER CODE:



| Position | Dimension | |
|----------|-----------|-------|
| | A | B |
| 06 | 12.28 | 5.08 |
| 08 | 14.82 | 7.62 |
| 10 | 17.36 | 10.16 |
| 12 | 19.90 | 12.70 |
| 14 | 22.44 | 15.24 |
| 16 | 24.98 | 17.78 |
| 20 | 30.06 | 22.86 |
| 24 | 35.14 | 27.94 |
| 26 | 37.68 | 30.48 |
| 30 | 42.76 | 25.56 |
| 34 | 47.84 | 40.64 |
| 40 | 55.46 | 48.26 |
| 50 | 68.16 | 60.96 |
| 60 | 80.86 | 73.66 |
| 64 | 85.94 | 78.74 |

| GENERAL TOLERANCE | | ANGLE TOLERANCE | | PROJECTION | TITLE |
|-------------------|-------|---------------------|--------------|-------------------------------------------------------|---------------------------|
| X. | ±0.60 | X. | ±5° | | I.D.C SOCKET PITCH 2.54mm |
| .X | ±0.38 | .X | ±3° | mm | |
| .XX | ±0.25 | .XX | ±2° | A4 | SERIES DS1016 SERIES |
| DRAWING TYPE | | CUSTOMER | | 晨翔电子有限公司 CONNFLY CONNELY ELECTRONIC CO. LTD | |
| SCALE | | 1:1 | SHEET 1 OF 1 | | |
| DRAWING NO. | | C-DS1016-XXXXXX-X-C | | | |