

Lötfreie Kabelschuhe ohne Isolation

DIN 46234, ausgenommen*

Werkstoff:
E-CU sn = Elektrolytkupfer verzinkt

Temperaturbeständigkeit:
bis +125°C

Bestellbeispiel:
Exemple de commande:
Example of order:

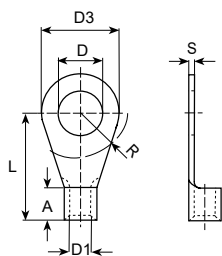
3490A

Cosses à sertir sans isolation

DIN 46234, excepté*

Matière:
E-CU sn = cuivre électrolytique étamé

Résistant à une température:
jusqu'à +125°C



Uninsulated solderless terminals

DIN 46234, except*

Material:
E-CU sn = tin-plated electrolytic copper

Temperature range:
up to +125°C

UL- No. E235797

mm ² (AWG)	für Bolzen pour borne for stud	Artikel-Nr. Numéro d'article Part-No.	DIN 46 234	øD mm	øD1 mm	øD3 mm	L mm	A mm	R mm	S mm	Stand.- Packg.	Werkzeuge Outils Tools
0.1-0.5 (26-22)	M2	3490A	2 - 0.5	2.2	1	5	10	4	4	0.5	2000	3975D
	M2.5	3491A	2.5 - 0.5	2.7	1	5	10	4	4	0.5	2000	
	M3	3492A	3 - 0.5	3.2	1	5	10	4	4.5	0.5	2000	
	M3.5	3493A	3.5 - 0.5	3.7	1	6	12	4	4.5	0.5	2000	
	M4	3494A	4 - 0.5	4.3	1	6.5	12	4	6	0.5	2000	
	M5	3496A	5 - 0.5	5.3	1	8	12	4	6.5	0.5	2000	
0.5-1 (22-18)	M2	3500A	*	2.2	1.6	6	11	5	4.5	0.8	2000	3975D 3980N 3984E
	M2.5	3501A	2.5 - 1	2.7	1.6	6	11	5	4	0.8	2000	
	M3	3502A	3 - 1	3.2	1.6	6	11	5	4.5	0.8	2000	
	M3	3503A	*	3.2	1.6	5.5	10	4.8	3.5	0.8	2000	
	M3.5	3504A	3.5 - 1	3.7	1.6	6	11	5	4.5	0.8	2000	
	M3.5	3505A	*	3.7	1.6	6.5	11	4.8	3.5	0.8	2000	
	M4	3506A	*	4.3	1.6	6.5	11	4	3.5	0.8	2000	
	M4	3507A	*	4.3	1.6	7	11.5	5	5.5	0.8	1000	
	M4	3508A	4 - 1	4.3	1.6	8	12	5	6	0.8	1000	
	M5	3509A	*	5.3	1.6	8	12.5	5	6	0.8	1000	
	M5	3510A	5 - 1	5.3	1.6	10	13	5	6.5	0.8	1000	
	M6	3512A	*	6.4	1.6	10	13	5	6.5	0.8	1000	
	M6	3513A	*	6.4	1.6	11	15	5	10	0.8	500	
	M8	3514A	*	8.4	1.6	14	17	5	10	0.8	500	
1.5-2.5 (16-14)	M3	3515A	3 - 2.5	3.2	2.3	6	11	5	4.5	0.8	1000	3980N 3982E 3984F
	M3.5	3516A	3.5 - 2.5	3.7	2.3	6	11	5	4.5	0.8	1000	
	M3.5	3517A	*	3.7	2.3	6.6	11	5	4.5	0.8	1000	
	M4	3518A	*	4.3	2.3	6.8	11.6	5	4.5	0.8	1000	
	M4	3519A	4 - 2.5	4.3	2.3	8	12	5	6	0.8	1000	
	M5	3520A	*	5.3	2.3	8	13.5	5	6	0.8	1000	
	M5	3521A	5 - 2.5	5.3	2.3	10	14	5	6.5	0.8	1000	
	M6	3522A	*	6.4	2.3	12	16	5	6.5	0.8	1000	
	M6	3523A	6 - 2.5	6.5	2.3	11	16	5	7.5	0.8	1000	
	M8	3525A	8 - 2.5	8.4	2.3	14	17	5	10	0.8	500	
	M10	3527A	*	10.5	2.3	18	18.5	5	12	0.8	500	
	M12	3528A	*	13	2.3	18	20	5	12	0.8	500	
	M16	3529A	*	17.2	2.3	27	26	5	16	0.8	500	
4-6 (12-10)	M4	3530A	4 - 6	4.3	3.6	8	14	6	6	1	500	3980N 3982E 3984F
	M5	3532A	5 - 6	5.3	3.6	10	15	6	6.5	1	500	
	M6	3534A	6 - 6	6.5	3.6	11	16	6	7.5	1	500	
	M8	3538A	8 - 6	8.4	3.6	14	19	6	10	1	200	
	M10	3540A	10 - 6	10.5	3.6	18	21	6	12	1	200	
	M12	3542A	*	13	3.6	18	21	6	18	1	200	