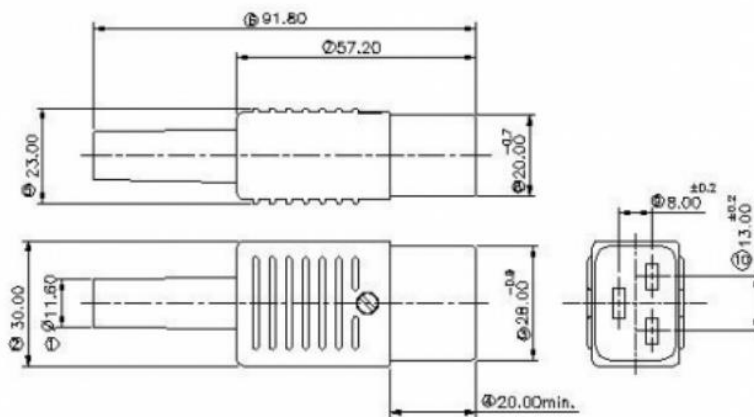


## Datasheet

# Female Straight Cable Mount IEC Connector, Screw Termination

### Dimensions: (mm)



## Specifications

V / A Rating:	16 Amps, 250 VAC
Reference Standards:	IEC - 60320 - 1
Material (Contacts - Terminal):	Copper Alloy, Nickel Plated
Material (Body, Cable Lock):	Nylon
Permissible Temp. (For Soldering):	NA
Permissible Temp. (With / Without Load):	-20 deg.C to + 85 deg.C
Terminals:	Screw Type
Mounting:	Rewirable
H.V. Breakdown Test (for 1 Minute):	2 KV AC
Insulation Resistance @ 500 VDC:	100 Mohms Min.
Contact Resistance (Initial):	10 mohms Max.
Panel Thickness:	NA