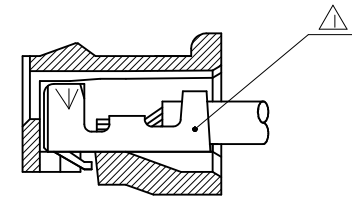
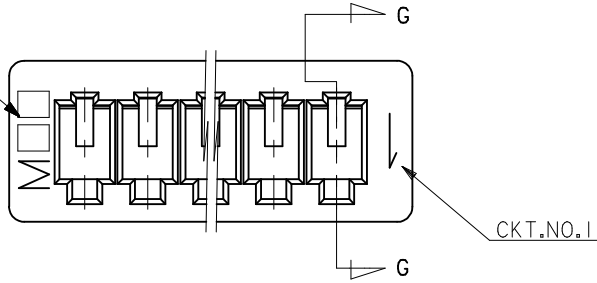


10 9 8 7 6 5 4 3 2 1

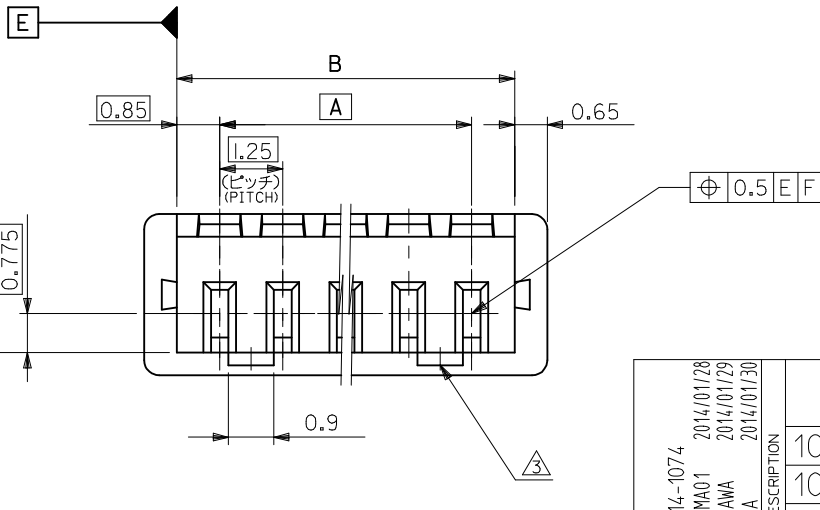
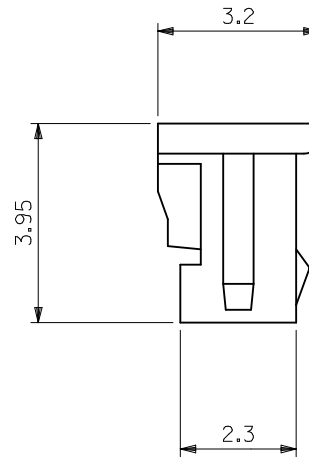
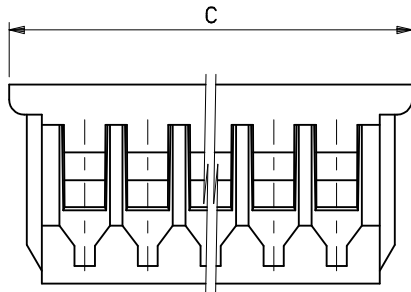
トレードマーク
TRADE MARK



SECT. G-G

注記 NOTES

- △ 適合ターミナル : 50058, 50079 シリーズ
APPLICABLE TERMINAL : 50058, 50079 SERIES
- 2 嵌合相手 : 53047, 53048, 53261, 53398 シリーズ
MATE WITH : 53047, 53048, 53261, 53398 SERIES
- △ ロックは、2, 3極は1ヶ, 4極以上は2ヶとする。
LOCKING WINDOW : ONE PLACE FOR 2 & 3 CKT.
AND TWO PLACES FOR MORE THAN 3 CKT.



MATERIAL
PBTP UL94V-0

PLU020686

| | | | | |
|----------|----------|----------|----------------|---------------------|
| 20.5 | 19.2 | 17.5 | 51021-1500 | 15 |
| 19.25 | 17.95 | 16.25 | -1400 | 14 |
| 18 | 16.7 | 15 | -1300 | 13 |
| 16.75 | 15.45 | 13.75 | -1200 | 12 |
| 15.5 | 14.2 | 12.5 | -1100 | 11 |
| 14.25 | 12.95 | 11.25 | -1000 | 10 |
| 13 | 11.7 | 10 | -0900 | 9 |
| 11.75 | 10.45 | 8.75 | -0800 | 8 |
| 10.5 | 9.2 | 7.5 | -0700 | 7 |
| 9.25 | 7.95 | 6.25 | -0600 | 6 |
| 8 | 6.7 | 5 | -0500 | 5 |
| 6.75 | 5.45 | 3.75 | -0400 | 4 |
| 5.5 | 4.2 | 2.5 | -0300 | 3 |
| 4.25 | 2.95 | 1.25 | 51021-0200 | 2 |
| C | B | A | ENG.NO. | 極数 CKTS. |

| | | | | | | | | | |
|--|--|------------------------|----------------------------|------------------------|--|--|--|---------------------------|--|
| REVISED EC NO: J2014-1074 DRWN: TYAJIMA01 2014/01/28 CHKD: KASAKAWA 2014/01/29 APPR: NUKITA 2014/01/30 | GENERAL TOLERANCES (UNLESS SPECIFIED) | | DIMENSION STYLE MM ONLY | | SCALE 10:1 | DESIGN UNITS METRIC | | THIRD ANGLE PROJECTION | |
| | 10 UNDER ±0.20 | 10 OVER 30 UNDER ±0.25 | 30 OVER ±0.30 | DRAWN BY TYAJIMA01 | DATE 2014/01/28 | TITL 1.25 W/B CONN. REC. HOUSING | | | |
| | ANGULAR ±3 ° | | | CHECKED BY KASAKAWA | DATE 2014/01/29 | molex | | | |
| | DRAFT WHERE APPLICABLE MUST REMAIN WITHIN DIMENSIONS | | | APPROVED BY NUKITA | DATE 2014/01/30 | | | | |
| MATERIAL PBTP UL94V-0 | | | SBB TABLE | | THIS DRAWING CONTAINS INFORMATION THAT IS PROPRIETARY TO MOLEX INCORPORATED AND SHOULD NOT BE USED WITHOUT WRITTEN PERMISSION | | | | |

9 8 7 6 5 4 3 2