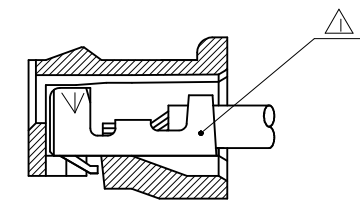
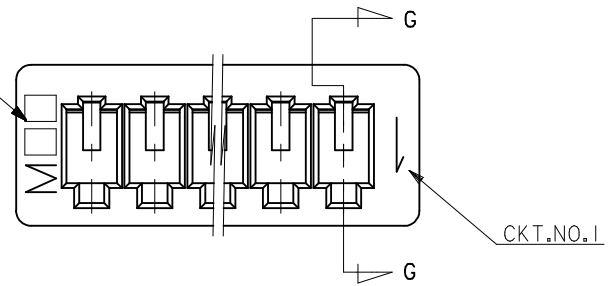


10 9 8 7 6 5 4 3 2 1

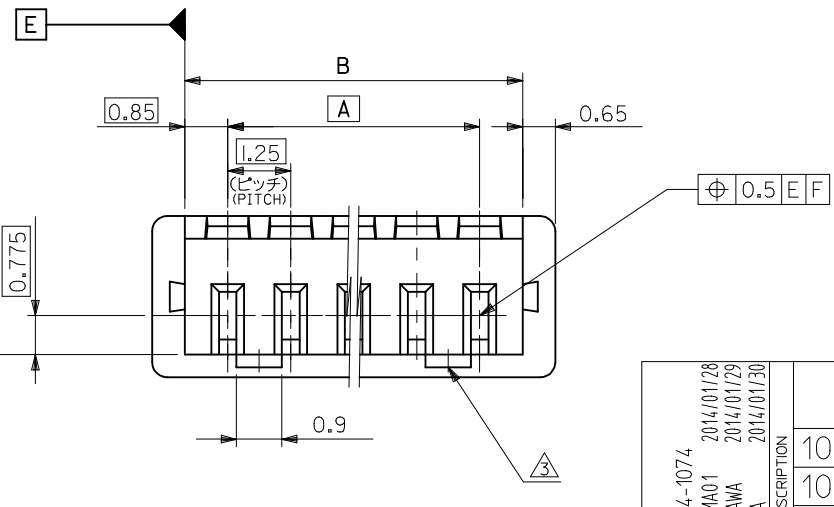
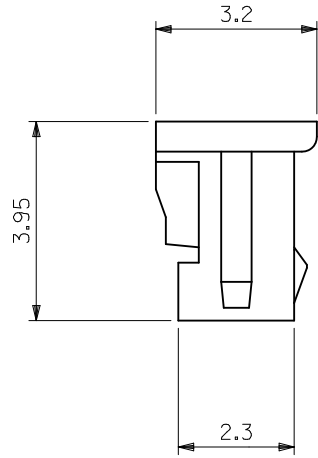
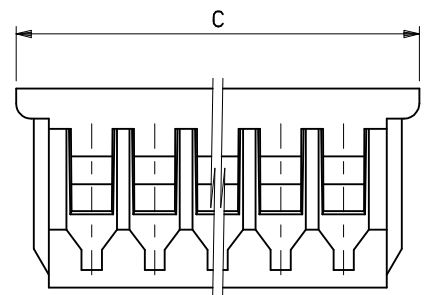
トレードマーク  
TRADE MARK



SECT. G-G

注記 NOTES

- △ 適合ターミナル : 50058, 50079 シリーズ  
APPLICABLE TERMINAL : 50058, 50079 SERIES
- 2 嵌合相手 : 53047, 53048, 53261, 53398 シリーズ  
MATE WITH : 53047, 53048, 53261, 53398 SERIES
- △ ロックは、2, 3極は1ヶ, 4極以上は2ヶとする。  
LOCKING WINDOW : ONE PLACE FOR 2 & 3 CKT.  
AND TWO PLACES FOR MORE THAN 3 CKT.



PLU020469

20.5	19.2	17.5	51021-1500	15
19.25	17.95	16.25	-1400	14
18	16.7	15	-1300	13
16.75	15.45	13.75	-1200	12
15.5	14.2	12.5	-1100	11
14.25	12.95	11.25	-1000	10
13	11.7	10	-0900	9
11.75	10.45	8.75	-0800	8
10.5	9.2	7.5	-0700	7
9.25	7.95	6.25	-0600	6
8	6.7	5	-0500	5
6.75	5.45	3.75	-0400	4
5.5	4.2	2.5	-0300	3
4.25	2.95	1.25	51021-0200	2
<b>C</b>	<b>B</b>	<b>A</b>	<b>ENG.NO.</b>	<b>極数 CKTS.</b>

MATERIAL  
PBTP UL94V-0

REVISED EC NO: J2014-1074 DRWN: TYAJIMA01 2014/01/28 CHKD: KASAKAWA 2014/01/29 APPR: NUKITA 2014/01/30	GENERAL TOLERANCES (UNLESS SPECIFIED)		DIMENSION STYLE MM ONLY		SCALE 10:1	DESIGN UNITS METRIC		THIRD ANGLE PROJECTION	
	10 UNDER ±0.20	10 OVER 30 UNDER ±0.25	30 OVER ±0.30	DRAWN BY TYAJIMA01	DATE 2014/01/28	TITL 1.25 W/B CONN. REC. HOUSING			
	ANGULAR ±3 °			CHECKED BY KASAKAWA	DATE 2014/01/29	<b>molex</b>			
	DRAFT WHERE APPLICABLE MUST REMAIN WITHIN DIMENSIONS			APPROVED BY NUKITA	DATE 2014/01/30				
THIS DRAWING CONTAINS INFORMATION THAT IS PROPRIETARY TO MOLEX INCORPORATED AND SHOULD NOT BE USED WITHOUT WRITTEN PERMISSION									