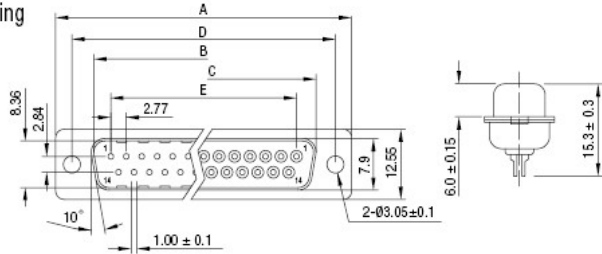
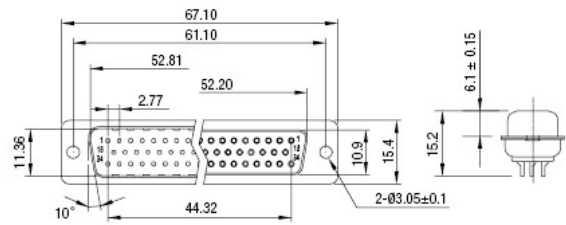


Outline Drawing

◆ Male / Female common (9-core ~ 37-core)

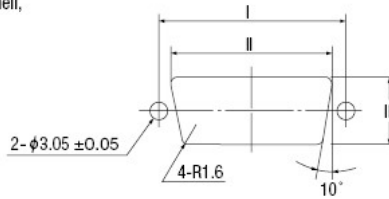


◆ Male / Female common (50-core)



(Unit: mm)

(Note) Dimension B is the dimension of the male side shell, and Dimension C that of the female side shell.



● Panel Cut Size Table

Number of Cores	I ± 0.15	II ± 0.2	III ± 0.2
9	24.99	20.6	12.0
15	33.32	28.8	12.0
25	47.04	42.6	12.0
37	63.50	59.0	12.0
50	61.11	56.6	15.2

Number of Cores	Contact Shape	Model Number	A ± 0.25	B ± 0.25	C ± 0.25	D ± 0.25	E ± 0.25	Weight (g)
9	Male	DB-9SP	30.81	16.92	-	24.99	11.08	4.5
	Female	DB-9SS	30.81	-	16.33	24.99	11.08	5.0
15	Male	DB-15SP	39.14	25.25	-	33.32	19.39	6.0
	Female	DB-15SS	39.14	-	24.66	33.32	19.39	7.0
25	Male	DB-25SP	53.04	38.96	-	47.04	33.24	9.0
	Female	DB-25SS	53.04	-	38.38	47.04	33.24	10.5
37	Male	DB-37SP	69.32	55.42	-	63.50	49.86	12.0
	Female	DB-37SS	69.32	-	54.84	63.50	49.86	14.5
50	Male	DB-50SP	67.10	52.81	-	61.11	44.32	14.0
	Female	DB-50SS	67.10	-	52.20	61.11	44.32	17.5