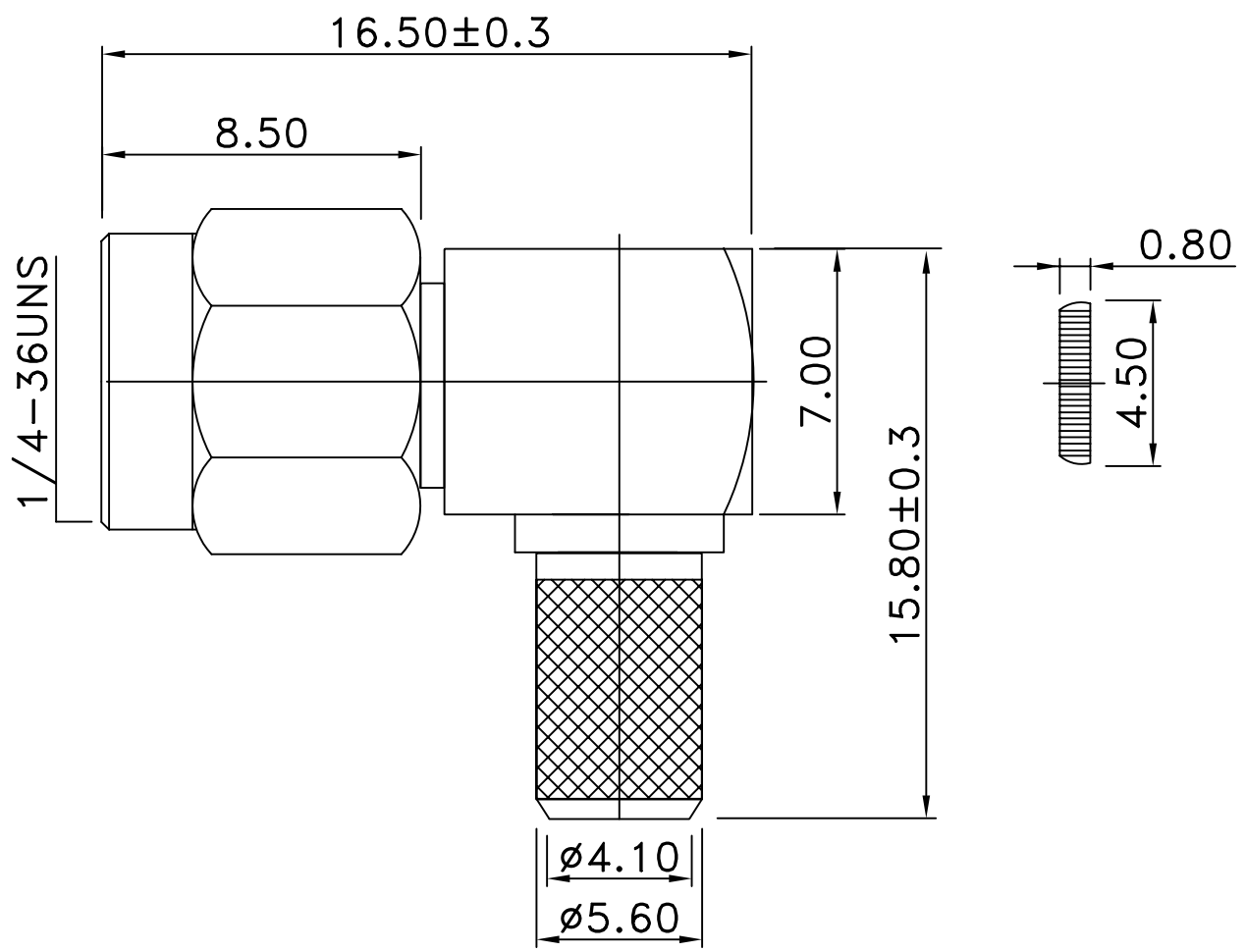
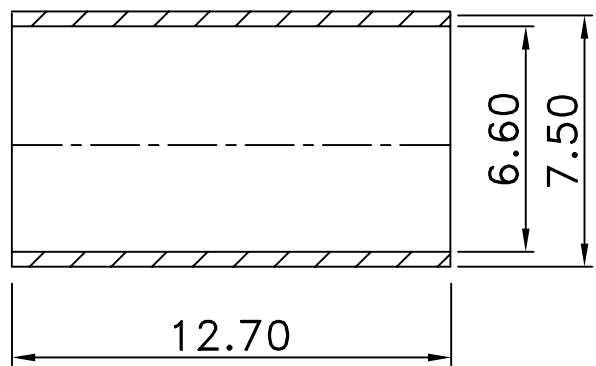


REV	DESCRIPTION	DRAWN	DATE



9	FERRULE	1	BRASS	GOLD
8	COVER	1	BRASS	GOLD
7	HOUSING	1	BRASS	GOLD
6	BODY	1	BRASS	GOLD
5	WASHER	1	STELL	NONE
4	GASKET	1	SILICON	NONE
3	INSULATOR	1	TEFLON	NONE
2	PIN	1	BRASS	GOLD
1	SHELL	1	BRASS	GOLD

NO	Description	Qty	Material	Finish
----	-------------	-----	----------	--------

UNLESS OTHERWISE SPECIFIED
 1.REMOVE ALL BURRS.
 2.BREAK ALL CONNERS & EDGES CO.15 MAX.
 3.CHAMFER 1ST & LAST THREADS 45°.
 4.DIAMETERS ON COMMON CENTERS.
 TO BE CONCENTRIC WITHIN 0.1 T.I.R.
 5.ALL DIMENSIONS ARE AFTER PLATING.

* MAJOR DIMENSION
 UNLESS OTHERWISE NOTED TOLERANCES
 0.5-6=±0.2
 6-30=±0.4
 30-120=±0.6
 120-315=±1.0
 ANGLES=±1°

APPROVED
 CHECKED
 DRAWN andrew
 DRAWN DATE 03/06/11

TITLE SMA MALE R/A CRIMP FOR H155
 DRAWING NO. SMA-01-70-J-TGG
 REV A
 FILE NO.