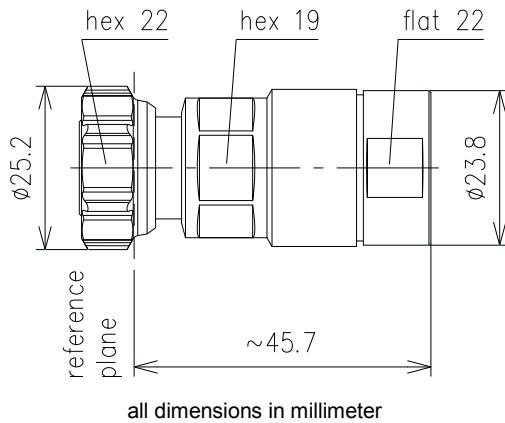


## DATA SHEET

## Cable Plug for LF 1/2"-50, Type 4.3-10 || BN 431117 / PLU010727



Interface type	4.3-10 plug screw (50 Ω) per IEC 61169-54	
Version	MultiFit™	
Frequency range	DC to 6 GHz	
VSWR, max.	1.02 @ DC to 1 GHz 1.03 @ 1 to 2.7 GHz 1.06 @ 2.7 to 3.8 GHz 1.1 @ 3.8 to 6 GHz	
Inner conductor material / surface finish	copper alloy / silver plated	
Outer conductor material / surface finish	copper alloy / CuSnZn plated	
Other metal parts / surface finish	copper alloy / bright nickel plated copper alloy / Sn plated copper alloy / CuSnZn plated	
Insulation	PTFE, PE	
Sealing	silicone rubber, EPDM	
Degree of protection	IP68 (mated)	
Cable compatibility	Spinner Acome Andrew Draka Eupen Hansen Hengxin Leoni LS Cables RFS	SPINNERFlex™ LF1/2"-50 HPL50-1/2F LDF4-50A RFA 1/2"-50 EC4-50 RF 50 1/2" HCAAY-50-12 FlexLine 1/2" R HFC 12D Flexible Foam LCF 12-50, LCF 12-50 L
Installation instructions	M32130	
Weight, approx.	95 g	
Included in delivery	cutting guide, installation instructions	