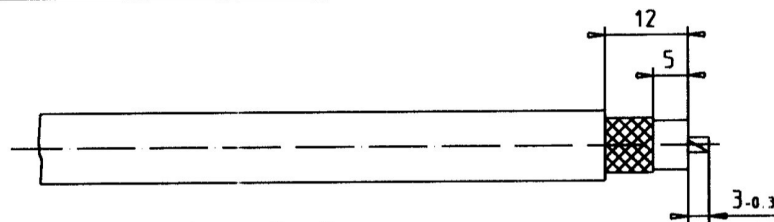
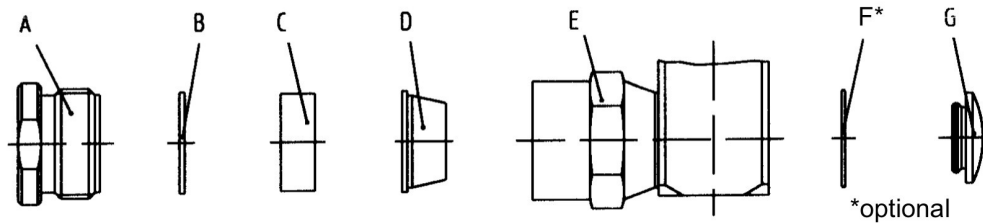


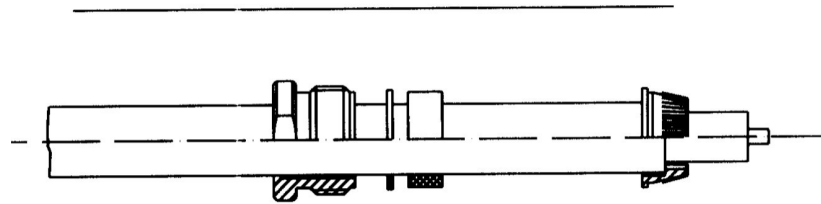
Assembly Instruction

solder/clamp

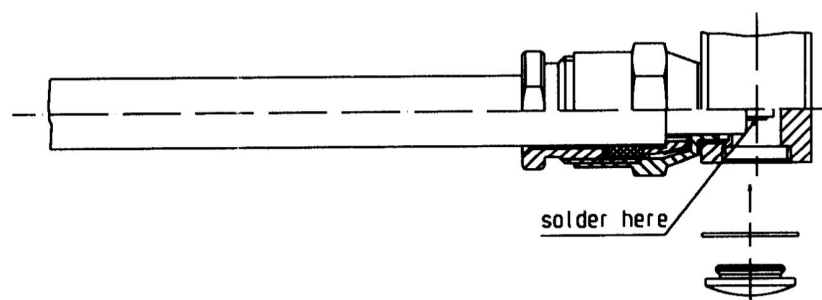
PLU010615



1) Prepare the cable according to the diagram.



- 2) Slide nut "A", washer "B" and gasket "C" onto the cable.
 3) Push clamp "D" over the braid and fold the braid back over the clamp.



- 4) Insert the prepared cable fully into the connector body "E" and position the center conductor of the cable in the slot of the center pin.
 5) Screw in nut "A" and tighten down with torque 4 Nm.
 6) Solder center pin to the center conductor of the cable.
 7) Place sealing "F" (if available) and screw cover "G" into the rear aperture of the connector body.
 (Loosening torque 80 Ncm min.)