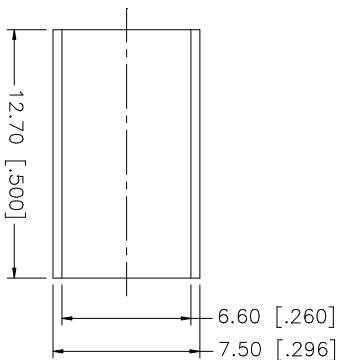
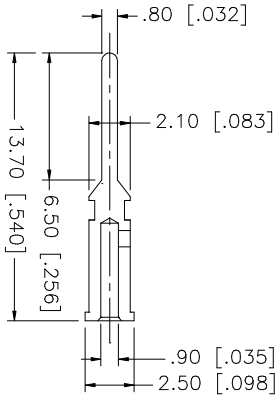
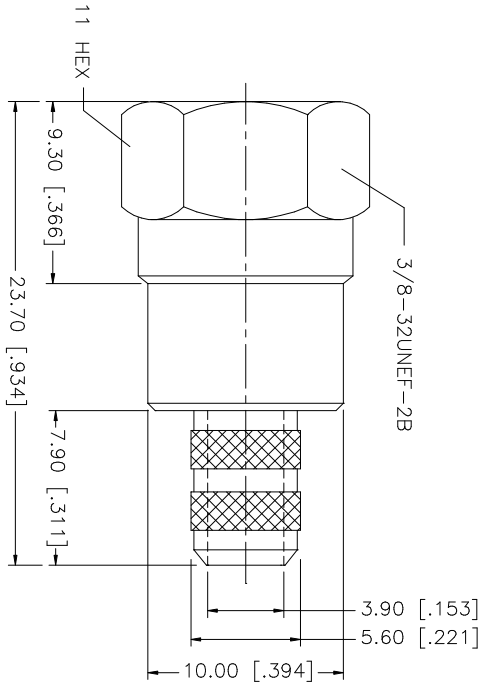
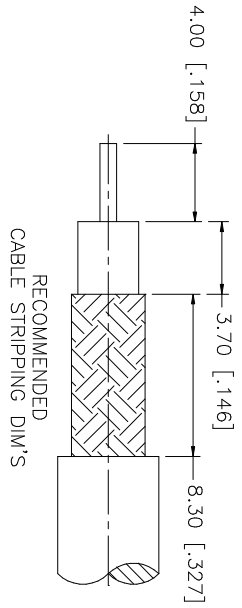


REV.	DATE	DESCRIPTION
A	03/06/03	UPDATE DRAWING FORMAT



NOTE:  
1. CRIMPED FERRULE  
HEX CRIMP SIZE ".255"  
2. CRIMPED CONTACT PIN  
HEX CRIMP SIZE ".068"

DESCRIPTION	MATERIAL	FINISH	QTY	DO NOT SCALE DRAWING	APPROVALS	DATE	PART DESCRIPTION		
1 SHELL/BODY	BRASS	NICKEL	1	UNLESS OTHERWISE SPECIFIED DIMENSIONS ARE IN MILLIMETERS. DIMENSIONS IN [ ] ARE IN INCHES AND FOR CUSTOMER REFERENCE ONLY. TOLERANCES FOR MILLIMETERS ARE: 0.5 - 8mm ± 0.20mm 8 - 30mm ± 0.40mm 30 - 120mm ± 0.50mm UNLESS OTHERWISE SPECIFIED TOLERANCES FOR INCHES ARE: .020 - .315 = ± 0.007" .315 - 1.180 = ± 0.015" 1.180 - 4.724 = ± 0.020"	CAD FILE	DRAWN	G.R.S.	03/06/03	<b>Amphenol Connex</b> F CRIMP PLUG (FOR RG-59/U 20AWG - BELDEN 9100)
2 INSULATOR	DELRIN	NATURAL	1						
3 CONTACT PIN	BRASS	GOLD	1						
4 BARREL	BRASS	NICKEL	1						
5 FERRULE	BRASS	NICKEL	1						
6									
7									
8									
DESCRIPTION	MATERIAL	FINISH	QTY						