

Assembly instruction

Series N

AA 25.08.00
4726/KRI

No. 27418

Tools and materials required:

Stanley blade
Scissors, file
Spanner 14 mm and 16mm

Cable entry: Screw-type

Suitable cables (e.G.): TZC 500 32, Andrew C2FCP

Connector - types: (e.g.)
PLU010499

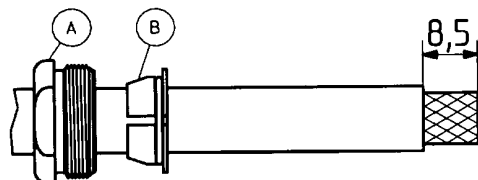
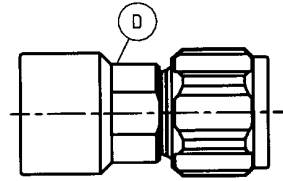
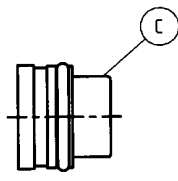
This connector
is supplied
in 4 parts.

Centre contact:

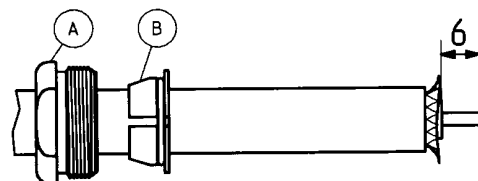
plugged-in

Braid:

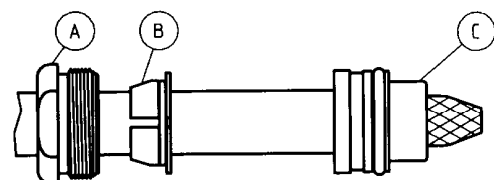
screwed



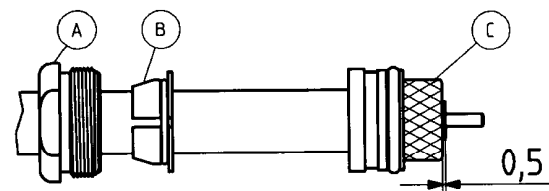
Slide nut A and ferrule B onto cable.
Prepare cable according to diagram.
CAUTION: Do not damage braid!



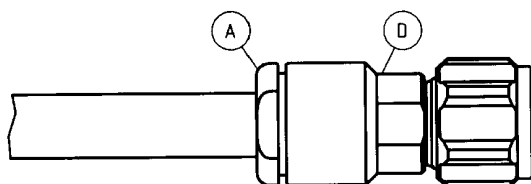
Push braid back slightly,
but don't undo braid.
Cut back dielectric and foil 6mm.
Perpendicular to cable axis.



Taper braid towards center conductor.
Slide part C onto cable,
flush to cable jacket.



Fold back braid over part C.
Check dimension 0,5mm.
Face inner conductor.



Push prepared cable into connector body D
and tighten nut A (torque 11 Nm).
Do not rotate cable in connector body!

SUHNER' skilled staff and specialised equipment are available to carry out complete R.F.lead-assembly on your behalf. We mount your connectors on cables at economic prices! Please contact our representative for further details of this service



HUBER + SUHNER AG CH-9100 HERISAU

Deutscher Text: siehe Rückseite