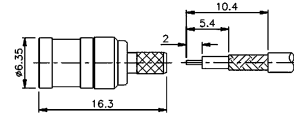
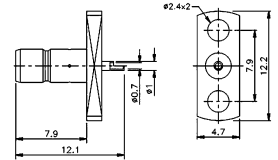


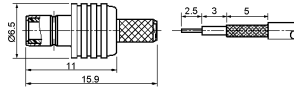
SMB male crimp type (RG174U/178U)
(gold plated)



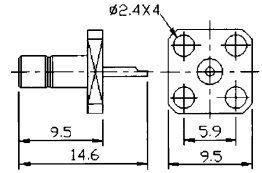
SMB female chassis mount
(gold plated)



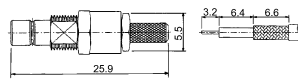
PLU010484
SMB female crimp type (RG174U/178U)
(gold plated)



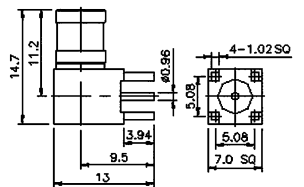
SMB female chassis mount
(gold plated)



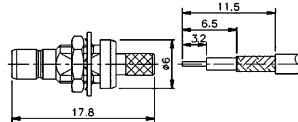
SMB female bulkhead crimp type (RG174U/178U)
(gold plated)



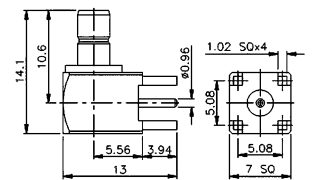
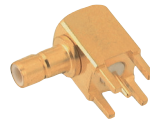
Right angle SMB male PCB
mount (gold plated)



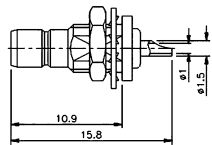
SMB female bulkhead crimp type (RG174U)
(gold plated)



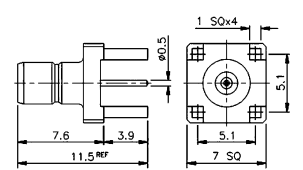
Right angle SMB female PCB
mount (gold plated)



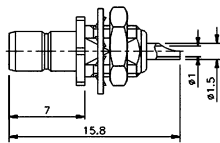
SMB female bulkhead
(gold plated)



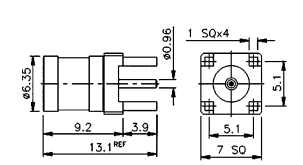
SMB female PCB mount
(gold plated)



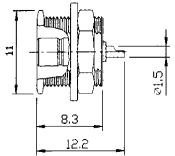
SMB female bulkhead
(gold plated)



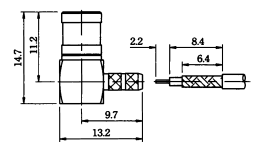
SMB male PCB mount
(gold plated)



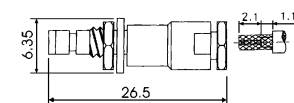
SMB female bulkhead
(gold plated)



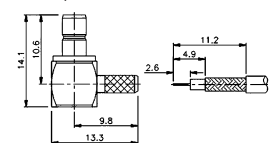
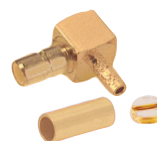
Right angle SMB male crimp type (RG174U/178U)
(gold plated)



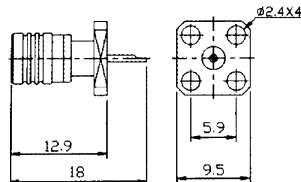
SMB female bulkhead clamp type (RG174U/178U)
(gold plated)



Right angle SMB female crimp type (RG174U/178U)
(gold plated)



SMB male chassis mount
(gold plated)



Double SMB male
(gold plated)

