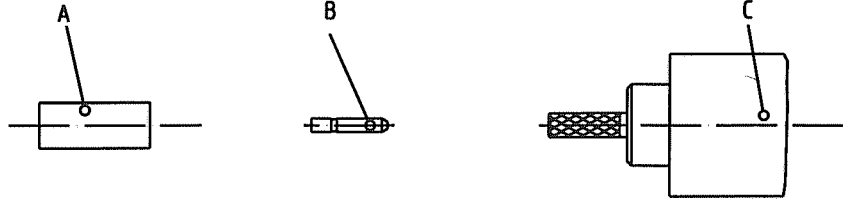


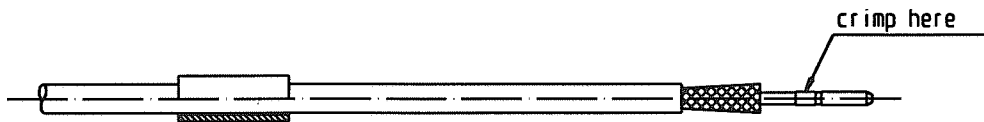
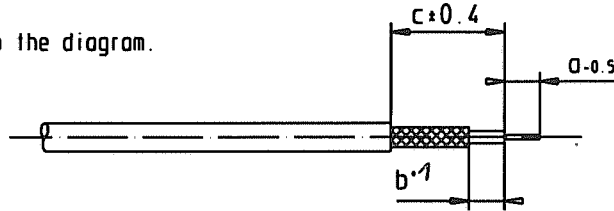
Straight connector  
for flexible cable

Cable entry:  
Center contact - crimp  
Braid - crimp

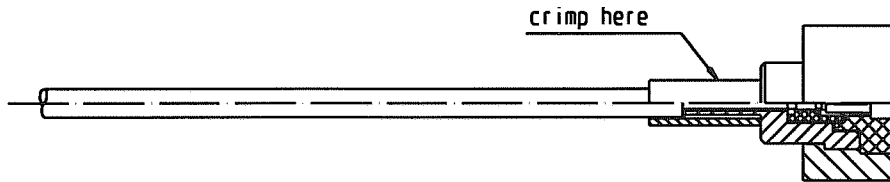


1) Prepare the cable according to the diagram.

cable type	a	b	c
01	2.5	3.8	9.2
02/03/V2....	2.5	2.5	8



- 2) Slide ferrule "A" onto the cable.
- 3) Push center pin "B" over the inner conductor of the cable up to the dielectric and crimp it. \*)
- 4) Splay out the braid.



- 5) Insert the prepared cable into the connector body "C". Ensure that the braid covers the knurled connector end.
- 6) Slide ferrule "A" over the braid up to the connector body and crimp as close to the connector body as possible. \*)

\*) For the crimping die part-nr. please consult the relevant customer drawing.

fuer diese technische Unterlage behalten wir uns alle Rechte vor. (DIN 34)

e	07-0873	10.1.08	Ja	<b>Rosenberger</b> Hochfrequenztechnik 84526 Tittmoning 	
d	04-0423	06.07.04	Kra.S.		
c	99-0439	12.11.99	Kra.S.		
b	98-0327	06.08.1998	L.W.		Bearb. 12.03.1996 Krautnb.Sa. H 2:1 Gepr. 06.07.04
a	CAD-MTP	12.03.96	Kra.Sa.		Blatt 1/1
Zust.	Aenderung	Datum	Name		

**Tools:**

- Stripping tool
- Crimp tool 11 W 150-000