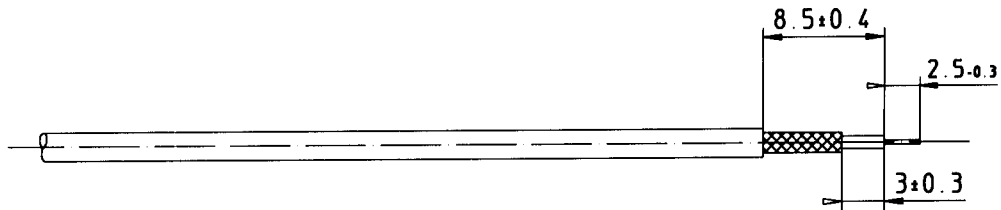
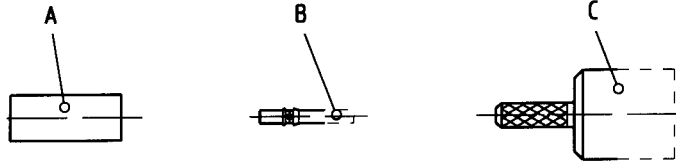


Assembly instruction 59 G2

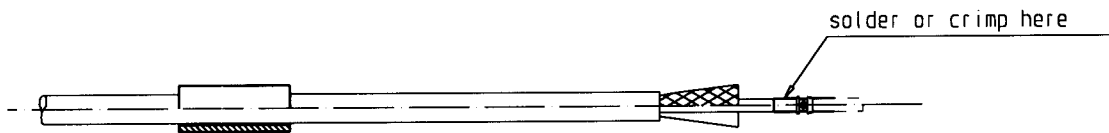
Series: SMB ; SMG ; SMC

Straight connector
for flexible cable

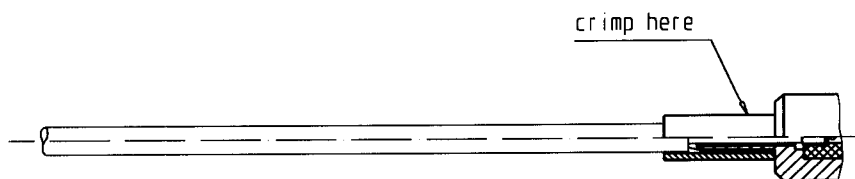
Cable entry :
Center contact - crimp
Braid - crimp



1) Prepare the cable according to the diagram.



- 2) Slide ferrule "A" onto the cable.
- 3) Push center pin "B" up the inner conductor of the cable and crimp resp. solder it.
- 4) Splay out the braid.



- 5) Insert the prepared cable into connector body "C". Ensure that the braid covers the knurled connector end.
- 6) Slide ferrule "A" over the braid and crimp as close to the connector body as possible. *)

*) For the crimping die part-nr. please consult the relevant customer drawing.

oder diese technische Unterlage benutzen
wir uns alle Rechte vor. (DIN 34)

				Rosenberger			
				Hochfrequenztechnik CAD			
				84526 Tittmoning			
b	99-0435	12.11.1999	Kra.Sa.	Bearb.	21.02.1996	Krautenb.Sa.	M 2:1
a	CAD-MTP	21.02.1996	Kra.Sa.	Gepr.			Blatt 1/1
Zust.	Aenderung	Datum	Name				

Tools:	
Stripping tools
Soldering equipment
Crimp tool 11 W 150-000

