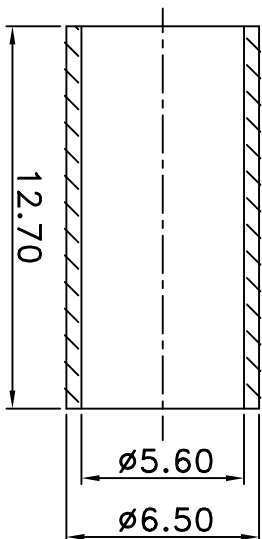
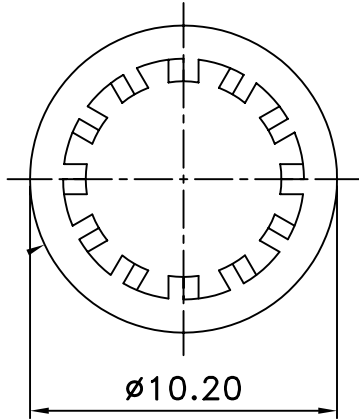
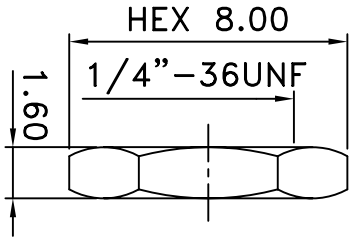
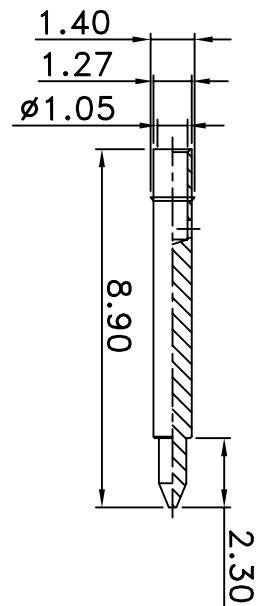
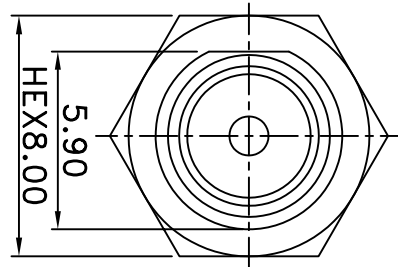
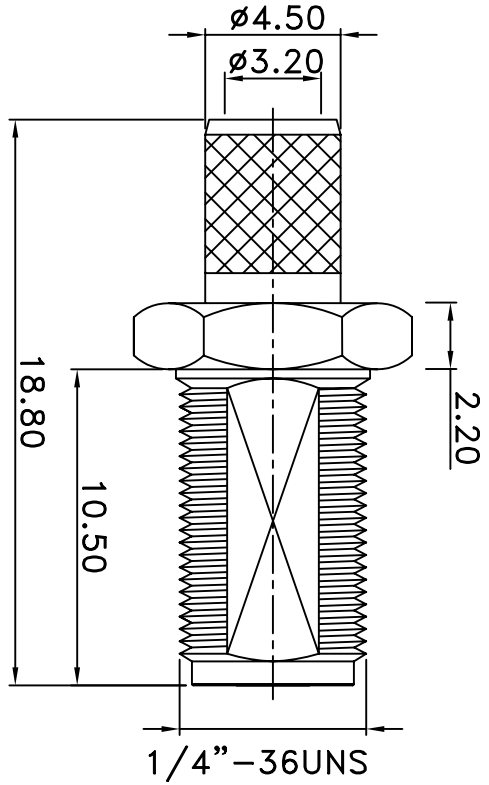


| REV | DESCRIPTION | DRAWN | DATE |
|-----|-------------|-------|------|
| | | | |



| NO | Description | Qty | Material | Finish |
|----|-------------|-----|----------|--------|
| 6 | FERRULE | 1 | BRASS | GOLD |
| 6 | PIN | 1 | BRASS | GOLD |
| 5 | BODY | 1 | BRASS | GOLD |
| 4 | INSULATOR A | 1 | TEFLON | NONE |
| 3 | WASHER | 1 | BRASS | GOLD |
| 2 | WASHER | 1 | BRASS | GOLD |
| 1 | NUT | 1 | BRASS | GOLD |

UNLESS OTHERWISE SPECIFIED
 1. REMOVE ALL BURRS
 2. BREAK ALL CORNERS & EDGES CO.15 MAX.
 3. CHAMFER 1ST & LAST THREADS 45°.
 4. DIAMETERS ON COMMON CENTERS TO BE CONCENTRIC WITH DIMENSIONS ARE AFTER PLATING.

* MAJOR DIMENSION
 UNLESS OTHERWISE NOTED TOLERANCES
 0.5-6 = ±0.2
 6-30 = ±0.4
 30-120 = ±0.6
 120-315 = ±1.0
 ANGLES = ±1°

APPROVED
 CHECKED
 DRAWN
 andrew
 DRAWN DATE 03/07/15

TITLE
 SMA FEMALE RP BKD CRIMP FOR RG58
 DRAWING NO.
 REV A
 FILE NO.