

# Assembly instruction: N / M straight RG-8

Series:  
N-50

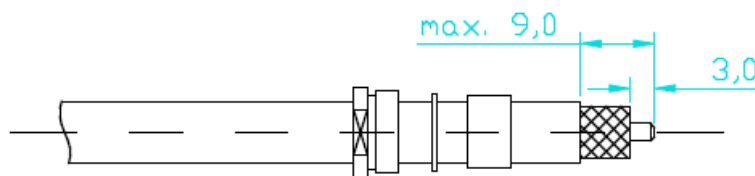
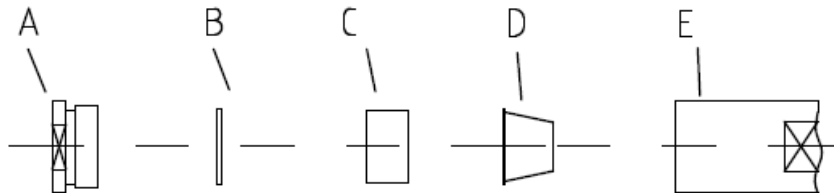
## ROSENBERGER

PLU 010204 , solderless version

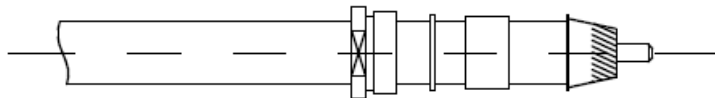
Cable entry:

Center contact: plugged

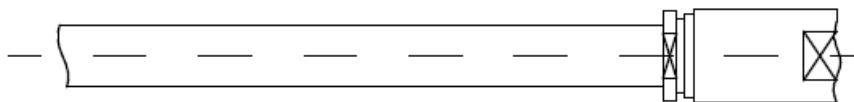
Outer contact: clamped



- 1) Slide nut 'A', washer 'B' and gasket 'C' onto the cable. Remove jacket according to drawing.



- 2) Push clamp 'D' over the braid and fold the braid back over the clamp. Strip cable dielectric according to drawing and chamfer center pin.



- 3) Insert the prepared cable fully into the connector body 'E'. Screw in nut 'A' and tighten down.