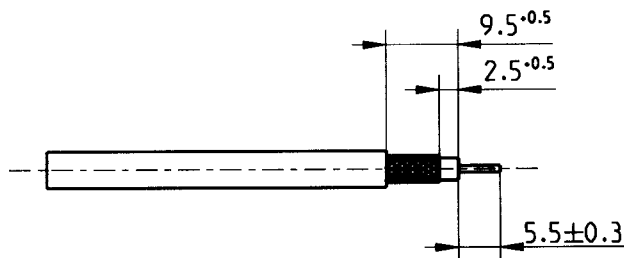
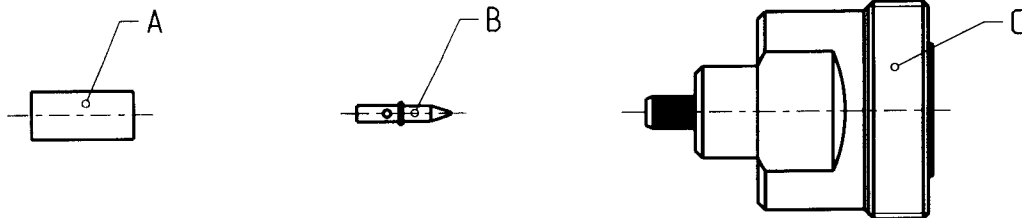
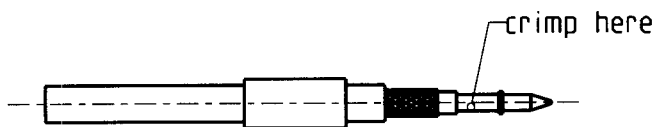


Straight Connector
for flexible cable

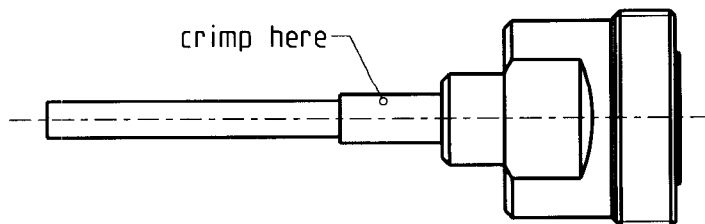
Cable entry:
Center conductor crimp
Outer conductor crimp



1) Prepare the cable according to the diagram.



- 2) Slide ferrule "A" onto the cable.
- 3) Push center pin "B" over the inner conductor of the cable up to the dielectric and crimp it. *)
- 4) Splay out the braid.



- 5) Insert the prepared cable end carefully into the connector body "C" to the stop.
- 6) Slide ferrule "A" over the braid up to the connector body and crimp as close to the connector body as possible. *)

*) For the crimping die part-nr. please consult the relevant customer drawing.

rev.	change-no	name	date	drawn	date	name	scale:	Tools:	
a00	06-s106	A_Wallner	28.02.2006	02.05.2002	A_Nobis	1:1		Stripping tool
100	02-v044	I_Schlager	07.05.2002	08.1.06	[Signature]	2/2		Crimp tool 11W 150-000
							
				Rosenberger					
				Hochfrequenztechnik					
				84526 Tittmoning Pro/ENGINEER					

All rights strictly reserved. Reproduction without written authority from the proprietor. Property of Rosenberger Hochfrequenztechnik.

fuer diese technische Unterlage behalten wir uns alle Rechte vor (DIN 34)

Format: TCG-FB-TP-PL-A-Montage-L
Date: AL-MONTAGE-TABLE.FRM
Version: 1.0

-METRIC-

ISO-Projektion
Methode E