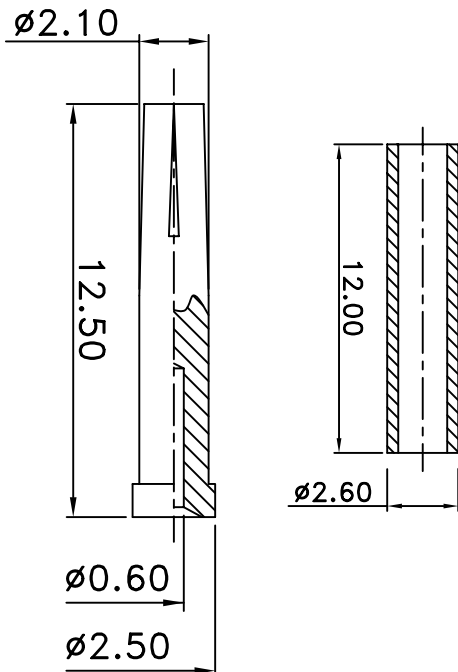
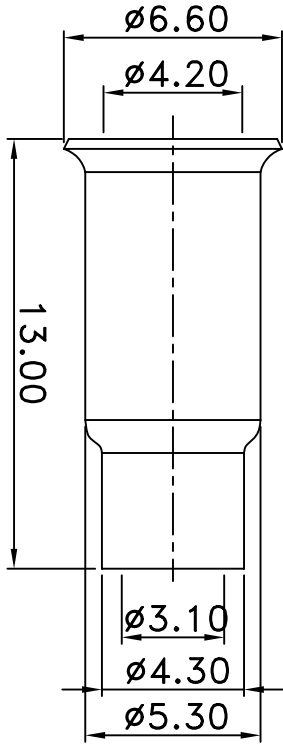
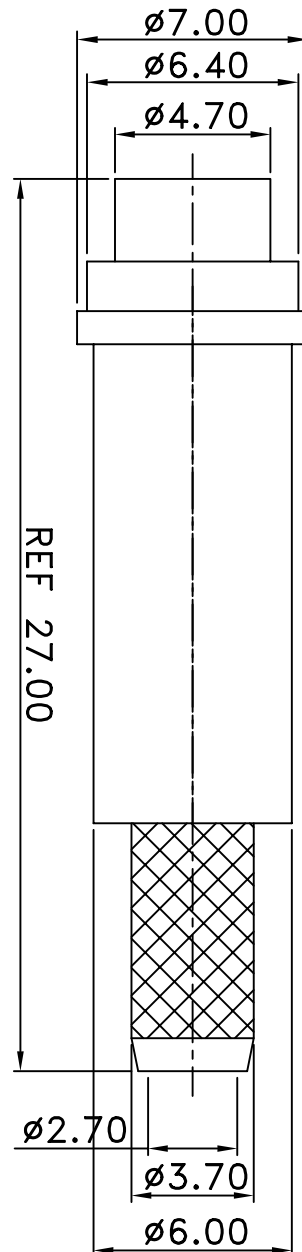
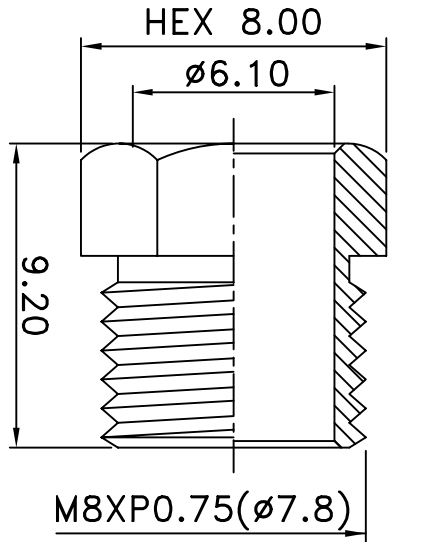


REV	DESCRIPTION	DRAWN	DATE



NO	Description	Qty	Material	Finish
5	DIELECTRIC	1	DELTRIN	NONE
4	NUT	1	BRASS	NICKEL
3	FERRULE	1	BRASS	NICKEL
2	PIN	1	BRASS	GOLD
1	BODY	1	BRASS	NICKEL

UNLESS OTHERWISE SPECIFIED
 1.REMOVE ALL BURRS
 2.BREAK ALL CORNERS & EDGES TO 0.15 MAX.
 3.CHAMFER 1ST & LAST THREADS 45°
 4.DIAMETERS ON COMMON CENTERS
 TO BE CONCENTRIC WITHIN 0.15
 5.ALL DIMENSIONS ARE AFTER PLATING.

* MAJOR DIMENSION UNLESS OTHERWISE NOTED TOLERANCES

APPROVED

CHECKED

DRAWN

DRAWING NO.

FILE NO.

REV A

UNLESS OTHERWISE NOTED TOLERANCES
 0.5-6 = ±0.2
 6-30 = ±0.4
 30-120 = ±0.6
 120-315 = ±1.0
 ANGLES = ±1°

SCALE 9/2 UNIT MM

DRAWN DATE 03/07/18

TITLE
 FME FEMALE CRIMP FOR RG174

REV A