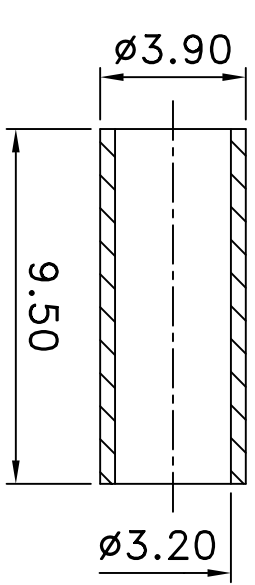
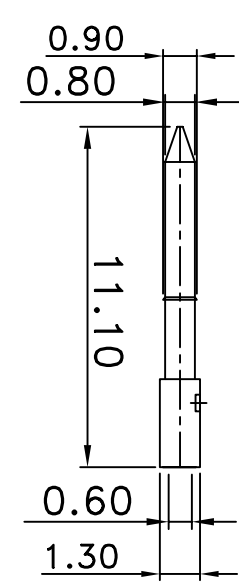
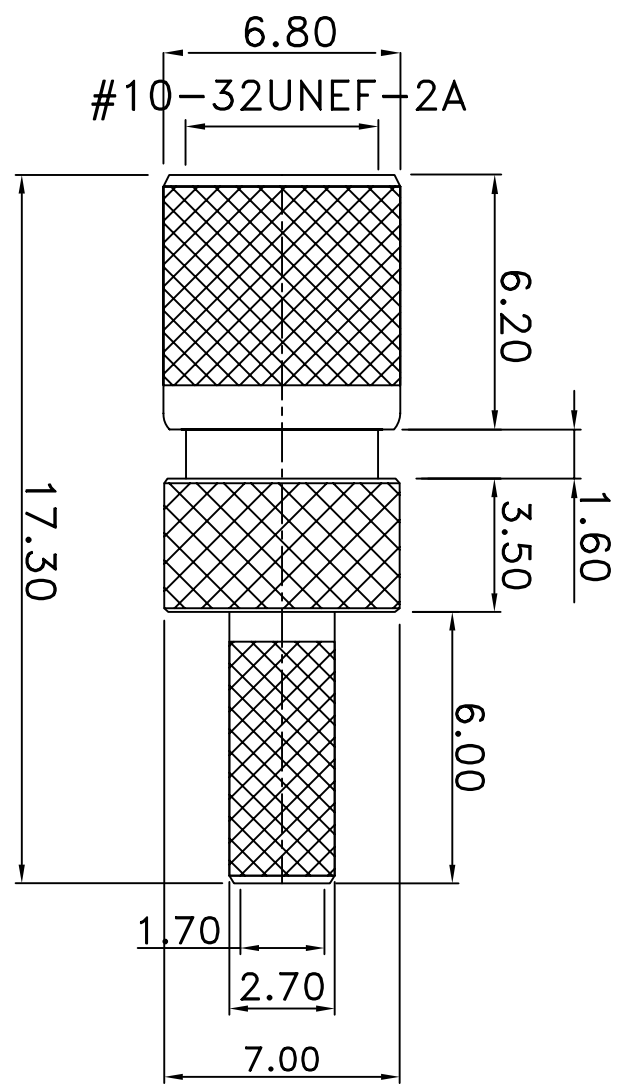


REV	DESCRIPTION	DRAWN	DATE



NO	Description	Qty	Material	Finish
6	WASHER	1	BRASS	GOLD
5	SHELL	1	BRASS	GOLD
4	FERRULE	1	BRASS	GOLD
3	DIELECTRIC	1	TEFLON	NONE
2	PIN	1	BRASS	GOLD
1	BODY	1	BRASS	GOLD

UNLESS OTHERWISE SPECIFIED
 1.REMOVE ALL BURRS
 2.BREAK ALL CORNERS & EDGES CO.15 MAX.
 3.CHAMFER 15° & LAST THREADS 45°
 4.DIAMETERS ON COMMON CENTERS
 5.ALL DIMENSIONS ARE WITHIN TOLERANCES AFTER PLATING.

* MAJOR DIMENSION UNLESS OTHERWISE NOTED. TOLERANCES
 0.5-6=±0.2
 6-30=±0.4
 30-120=±0.6
 120-315=±1.0
 ANGLES=±1°

APPROVED	CHECKED	DRAWN	DRAWN DATE
		andrew	03/06/12

TITLE	FILE NO.
MICRODOT PLUG CRIMP FOR RG174	
DRAWING NO.	
REV	B